

# Infinity Classic™



*All-Aluminum Garage Doors*



*Beautiful Wood Grain  
Powder Coat Finishes!*

(UPPER PHOTO) MODEL I006S WG, DARK CHERRY WOOD GRAIN FINISH  
(PHOTO AT RIGHT) MODEL I206C, CUSTOM ARCH, STANDARD WHITE



*An American Tradition of Quality*

**NORTHWEST DOOR®**

# INFINITY CLASSIC CORROSION-PROOF CONSTRUCTION

The Infinity Classic is constructed using commercial grade 6063-T5 extruded aluminum stiles and rails, mechanically fastened at meeting points to create a high strength door frame. At meeting rails we incorporate a new precisely engineered Tongue and Groove (T&G) section joint which has an enclosed box type construction. The new box construction is nine times stronger than it's shiplap predecessor and has a flexible gasket that reduces air infiltration creating a weather-tight seal.

The Infinity Classic is virtually maintenance free and built to last as long as you own your home!

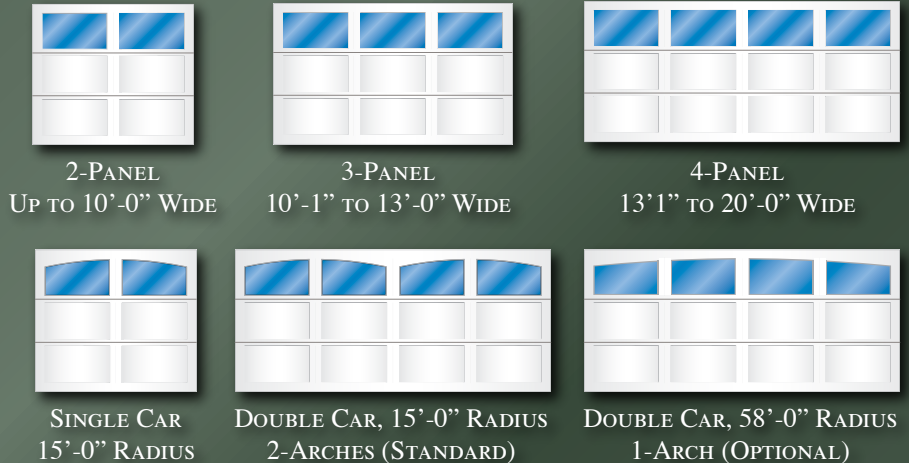


# GENERAL SPECIFICATIONS



- FRAME: 2" THICK, 6063-T5 EXTRUDED ALUMINUM, OPTIONAL EPS INSULATION
- WINDOWS: 1/8" SINGLE PANE CLEAR ANNEALED GLASS, OPTIONAL INSULATED, TINTED AND OBSCURE GLASS SEE PAGE 11
- PANELS: 1/4" ALUMINUM WITH CORRUGATED POLYALLOMER CORE, OPTIONAL 1" INSULATED AND V-GROOVE PANELS
- FINISH: WHITE POLYCRON III, OPTIONAL WOOD GRAIN AND POWDER COAT FINISHES SEE PAGE 4
- HARDWARE: GALVANIZED TORSION STANDARD LIFT, OTHER OPTIONS SEE PAGES 11
- BOTTOM SEAL: FLEXIBLE VINYL
- WARRANTY: LIMITED LIFETIME

*Doors are available in one inch increments up to 24 feet wide and 16 feet high, with a maximum total door size of 336 square feet. For the most authentic replication of the original carriage house style doors, doors up to 8 feet in height are 3 sections. 32 inches is our maximum section height.*

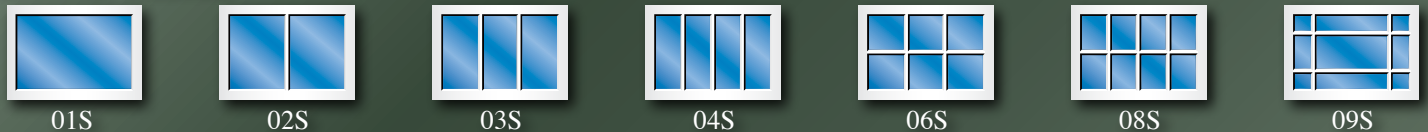


*Extruded aluminum design and mullion overlays are permanently adhered to the door and can be configured to create many carriage style designs. We offer seven base designs, seven standard window patterns, and six true arched window patterns. Our standard arch is 15' radius on both single car and double car doors, a single 58' radius arch is also available on double car doors. Optional custom arches can be made to match your exact door opening arch or other custom header design.*

## BASE DESIGNS:



## STANDARD WINDOWS:



## ARCHED WINDOWS:



# OPTIONAL INSULATION R 5.6\*

*The Infinity Classic door frame can be filled with (EPS) expanded polystyrene insulation that is form fitted to the exact profile of the stiles and rails. We use one inch thick insulated aluminum door panels which have an expanded polystyrene core and are reinforced with corrugated polyallomer stabilizers for additional strength. Windows are thermal pane glass. If desired insulated windows can be argon gas filled for even greater insulation efficiency. \*R Rating is based on calculations of overall efficiencies for an average of all door sizes.*

# OPTIONAL WOOD FINISHES



*Model I100A VG WG, Arched Top, V-Groove Panels, Dark Walnut Wood Grain Finish*

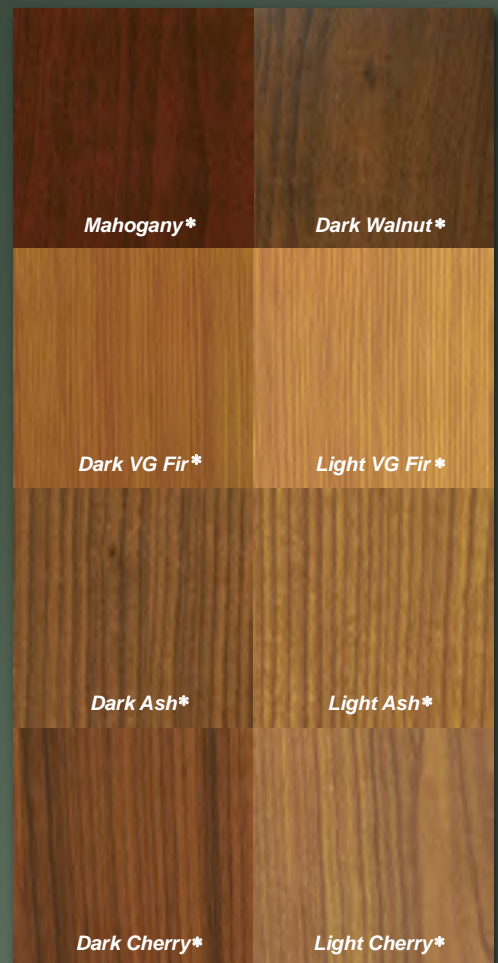
*Infinity Classic is available in a high performance state-of-the-art wood grain finish. Our doors look so realistic and natural that they are mistaken for real wood doors. The wood finish is a powder coat process, an excellent performer in coastal regions and where corrosion is present. All of the door surfaces are finished so the door is as beautiful on the inside as the outside.*

## POWDER COATED HARDWARE

*To further enhance the beauty of your door's interior, we offer optional color powder coated track and operational hardware in five solid colors; Black, Red, Grey, White and Brown.*



*Interior of door shown at right, Model I206S WG Dark Cherry finish with black powder coated track and hardware.*



\*NOTE: WOOD GRAINS AND COLORS WILL VARY DUE TO THE PRINTING PROCESS, THESE REPRESENTATIONS ARE NOT AN EXACT MATCH WITH ACTUAL PRODUCT.

# I-2 DESIGN SELECTION



UPPER PHOTO:  
Model I204S, field painted by others

PHOTO AT RIGHT:  
Model I209S, standard white Polycron III polyester finish, Deco Kit "C"  
(See page 11 for Deco Hardware)



## STANDARD AND ARCHED DESIGN:



I200S



I200A

## STANDARD AND ARCHED WINDOW DESIGNS:



I201S



I202S



I203S



I204S



I206S



I208S



I209S



I201A



I202A



I203A



I204A



I206A



I208A

# I-A, I-V DESIGN SELECTION



UPPER PHOTO:  
 Model IA06S, field painted by others

PHOTO AT RIGHT:  
 Model IA08A, arched windows, standard white  
 Polycron III polyester finish, custom Deco Hardware



## STANDARD DESIGNS, I-A OR I-V CONFIGURATIONS:



IA00S



IV00S

## STANDARD AND ARCHED WINDOW DESIGNS, I-A CONFIGURATIONS SHOWN:



IA01S



IA02S



IA03S



IA04S



IA06S



IA08S



IA09S



IA01A



IA02A



IA03A



IA04A



IA06A



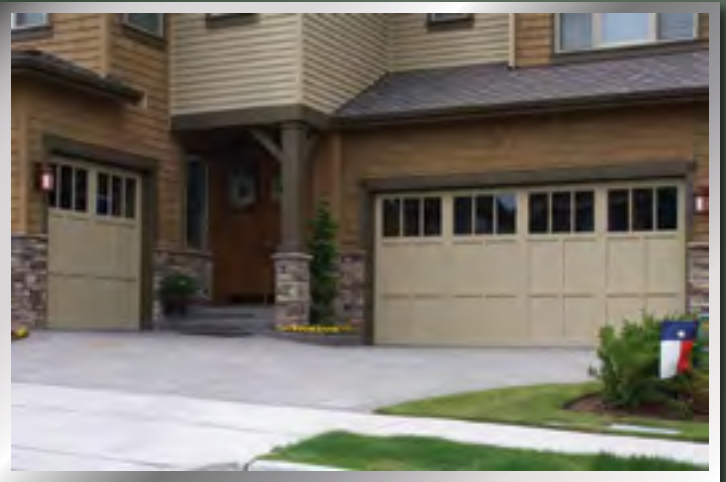
IA08A

# I-1 DESIGN SELECTION



UPPER PHOTO:  
 Model I106S, field painted by others,  
 Deco Kit "B" Hinges only

PHOTO AT RIGHT:  
 Model I103S, field painted by others



## STANDARD AND ARCHED DESIGN:



I100S



I100A

## STANDARD AND ARCHED WINDOW DESIGNS:



I101S



I102S



I103S



I104S



I106S



I108S



I109S



I101A



I102A



I103A



I104A



I106A



I108A

# I-0 DESIGN SELECTION



UPPER PHOTO:  
 Model I008S VG with V-Groove panels,  
 standard white Polycron III polyester finish

PHOTO AT RIGHT:  
 Model I002S WG Wood Grain Mahogany finish  
 (See page 4 for Wood Grain finishes)



## STANDARD AND ARCHED DESIGN:



I000S



I000A

## STANDARD AND ARCHED WINDOW DESIGNS:



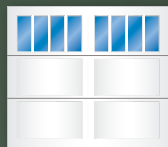
I001S



I002S



I003S



I004S



I006S



I008S



I009S



I001A



I002A



I003A



I004A



I006A



I008A



# I-3 DESIGN SELECTION



UPPER PHOTO:  
Model I303S, field painted by others

PHOTO AT RIGHT:  
Model I306S, standard white  
Polycron III polyester finish



## STANDARD AND ARCHED DESIGN:



I300S



I300A

## STANDARD AND ARCHED WINDOW DESIGNS:



I301S



I302S



I303S



I304S



I306S



I308S



I309S



I301A



I302A



I303A



I304A



I306A



I308A

# I-X DESIGN SELECTION



UPPER PHOTO:  
 Model IX08S, standard white  
 Polycron III polyester finish

PHOTO AT RIGHT:  
 Model IX08S, standard white  
 Polycron III polyester finish



STANDARD DESIGN:



IX00S

STANDARD AND ARCHED WINDOW DESIGNS:



IX01S



IX02S



IX03S



IX04S



IX06S



IX08S



IX09S



IX01A



IX02A



IX03A



IX04A



IX06A



IX08A

# OPTIONAL GLASS

The Infinity Classic standard glass is 1/8 inch clear annealed. We offer optional glass of many types such as insulated, tempered, obscure and tinted. Custom glass is available up to 9/16 inch thick to meet your specific requirements. Visit [NorthwestDoor.com](http://NorthwestDoor.com) for more glass samples.



# OPTIONAL DECORATIVE HARDWARE



**DECO KIT A**  
RUSTIC IRON  
BLACK POWDER COAT FINISH

**DECO KIT B**  
MALLEABLE IRON  
BLACK POWDER COAT FINISH

**DECO KIT C**  
STAMPED STEEL, CRINKLE TEXTURED  
BLACK POWDER COAT FINISH

# HIGH VALUE HARDWARE OPTIONS

## STANDARD HARDWARE:

- 15" RADIUS STANDARD LIFT SYSTEM
- 10,000 CYCLE TORSION SPRINGS
- 2" GALVANIZED TRACK
- BRACKET TRACK MOUNTING
- 2" BALL BEARING NYLON ROLLERS
- 14 GAUGE GALVANIZED HINGES

## HIGH VALUE OPTIONS:

- 12" RADIUS, LOW HEADROOM, FOLLOW ROOF LINE, HIGH LIFT AND VERTICAL LIFT HARDWARE SYSTEM
- 25,000 HIGH CYCLE EXTENDED LIFE TORSION SPRINGS
- 3" INDUSTRIAL DUTY GALVANIZED TRACK, 3" BALL BEARING ROLLERS\*
- HEAVY DUTY CONTINUOUS AND REVERSE ANGLE MOUNTED TRACK
- DOUBLE END HINGES, LONG STEM BALL BEARING NYLON ROLLERS\*\*
- 11 GAUGE GALVANIZED HINGES
- DECORATIVE EXTERIOR LIFT HANDLE
- POWDER COATED HARDWARE (SEE PAGE 4 FOR MORE INFORMATION)

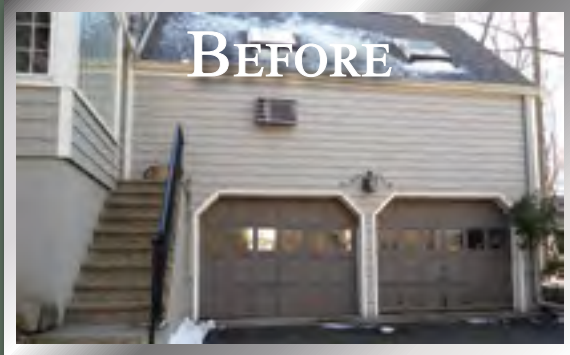
\*STANDARD ON ALL DOORS EXCEEDING 575# (APPROXIMATELY 144 SQ.FT.)

\*\*STANDARD ON DOORS 12' WIDE AND LARGER

Visit [NorthwestDoor.com](http://NorthwestDoor.com) or contact a Northwest Door Dealer regarding High Value Options

# INFINITY CLASSICS ARE A GREAT INVESTMENT

A garage door replacement continues to generate one of the best returns on your investment of all home remodeling projects year after year according to Remodeling Magazine's annual Cost vs. Value Reports. An upscale garage door in many areas of United States can recoup over 100% of its cost when the home is sold.



Garage doors cover about 1/3 of the front of an average home. By replacing old worn out doors with new Infinity Classic garage doors, it will improve your home's curb appeal and add from one to four percent value to your home, according to a nationwide survey of real estate agents.

If you would like to see what your home can look like with new garage doors from Northwest Door, ask your door dealer for a free demonstration at your home with our new Virtual Showroom Tablet App.

OUR NEW APP IS LIKE A MOBILE SHOWROOM,  
A GREAT TOOL FOR THE HOMEOWNER, BUILDER OR REMODELER.



## ENVIRONMENTAL ADVANTAGES



The Infinity Classic uses approximately 25% recycled aluminum in the aluminum frame; the maximum allowable to maintain both strength and quality assurance. Infinity Classics are manufactured in a "zero waste to landfill process".

## WARRANTY

Infinity Classic garage doors are a proven product. They are virtually maintenance free and extremely durable. These all-aluminum garage doors are crafted using only the finest materials available and feature Northwest Door's **Limited Lifetime Warranty**.

Ask your door dealer for complete warranty details or visit our website at [NorthwestDoor.com](http://NorthwestDoor.com)



**LiftMaster** Northwest Door recommends LiftMaster® Professional Line Garage Door Openers on all Northwest Door® garage doors.



**NORTHWEST DOOR®**  
Northwest Door, Incorporated  
19000 Canyon Road East - Puyallup, WA 98375-9746  
800-522-2264 [www.northwestdoor.com](http://www.northwestdoor.com)

Dealer Name: \_\_\_\_\_

